

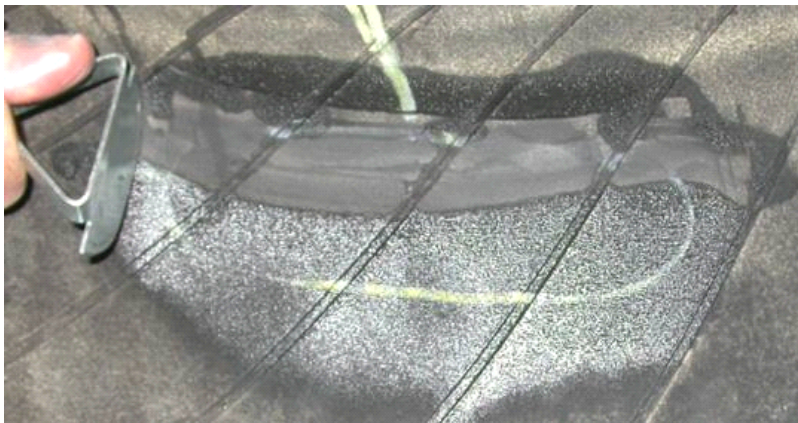
## Installation Process of RFID Tire Patch

The installation process consists of:

- Identifying the general area where the patch will go.
- Cleaning the surface of the inner liner in the area where the patch will go.
- Removing molded-in features such as ridges (strias) or texture (“alligator skin”).
- Marking the exact location where the patch will go.
- The distance between the patch center and the lip of the bead will be 105 – 115 mm.
- Applying Vulcanizing Cement and allowing the solvent to dry.
- Applying the patch to the prepared inner liner and applying pressure (“stitching it down”) to assure intimate contact.
- There will be no bubbles underneath the patch.
- The patch will be tightly adhered to the tire all the way around its periphery.
- Waiting the appropriate length of time for the adhesive system to cure (depending on temperature).



Applying cleaner fluid to the outlined area



Using a scraper to remove contaminants on the surface



Buffing outlined area to achieve a smooth with Grinding Wheel



Using a brass-bristle brush and cleaner to remove buffing dust from the buffed area.



Brushing the cement both into the cleaned area and the surface of the gray gum on the patch.



Allowing the solvent to dry 5min~10min after brushing the cement. (depending on temperature).

Peeling blue backing of the patch, when you install the patch, you must take care not to touch either the glued surface of the tire or exposed gray gum on the back of the patch. Allow the patch a minimum of 24 hours to properly cure to the tire before mounting on a vehicle.